

# RC200S

Meter mains, QO, combination service entrance, ringless socket, 200A, surface mount, no bypass

Product availability : Stock - Normally stocked in distribution facility



## Main

Product or component type	Meter Mains
Range of product	QO

## Complementary

Line Rated Current	200 A
Short-circuit current	22 kA
Network number of phases	1
Meter socket type	Ringless
Mounting	Surface
Number of spaces	0
Number of circuits	0
Number of Tandem Breakers	0
Hub type	A
Electrical connection	Lugs line side Lugs service ground
Wire Size	AWG 6...300 kcmil aluminium/copper)line side AWG 8...AWG 2/0 2 aluminium/copper)service ground
Tightening torque	Main lugs 250 lb.in, AWG 6...350 kcmil, aluminium/copper Lugs 250 lb.in, AWG 4...250 kcmil, aluminium/copper Service ground 50 lb.in, AWG 3...AWG 2/0, aluminium/copper Service ground 45 lb.in, AWG 6...AWG 4, aluminium/copper Service ground 40 lb.in, AWG 8, copper Cover 10 lb.in
Disconnect	Service disconnect (ordered separately)
Main Breaker Rating	200 A
Service feed location	OH UG

\* Price is "List Price" and may be subject to a trade discount – check with your local distributor or retailer for actual price.

Bypass type	No bypass
Height	18.23 in (463.04 mm)
Width	19.58 in (497.33 mm)
Depth	4.67 in (118.62 mm)

## Environment

Product certifications	UL E-6294
------------------------	-----------

## Ordering and shipping details

Category	00022 - QO METER MAINS
Discount Schedule	DE3A
GTIN	00785901393184
Nbr. of units in pkg.	1
Package weight(Lbs)	27.35 lb(US) (12.41 kg)
Returnability	Yes
Country of origin	MX

## Packing Units

Unit Type of Package 1	PCE
Package 1 Height	5.60 in (14.224 cm)
Package 1 width	20.40 in (51.816 cm)
Package 1 Length	19.80 in (50.292 cm)
Unit Type of Package 2	PAL
Number of Units in Package 2	36
Package 2 Weight	1003.00 lb(US) (454.953 kg)
Package 2 Height	40.00 in (101.6 cm)
Package 2 width	40.00 in (101.6 cm)
Package 2 Length	48.00 in (121.92 cm)

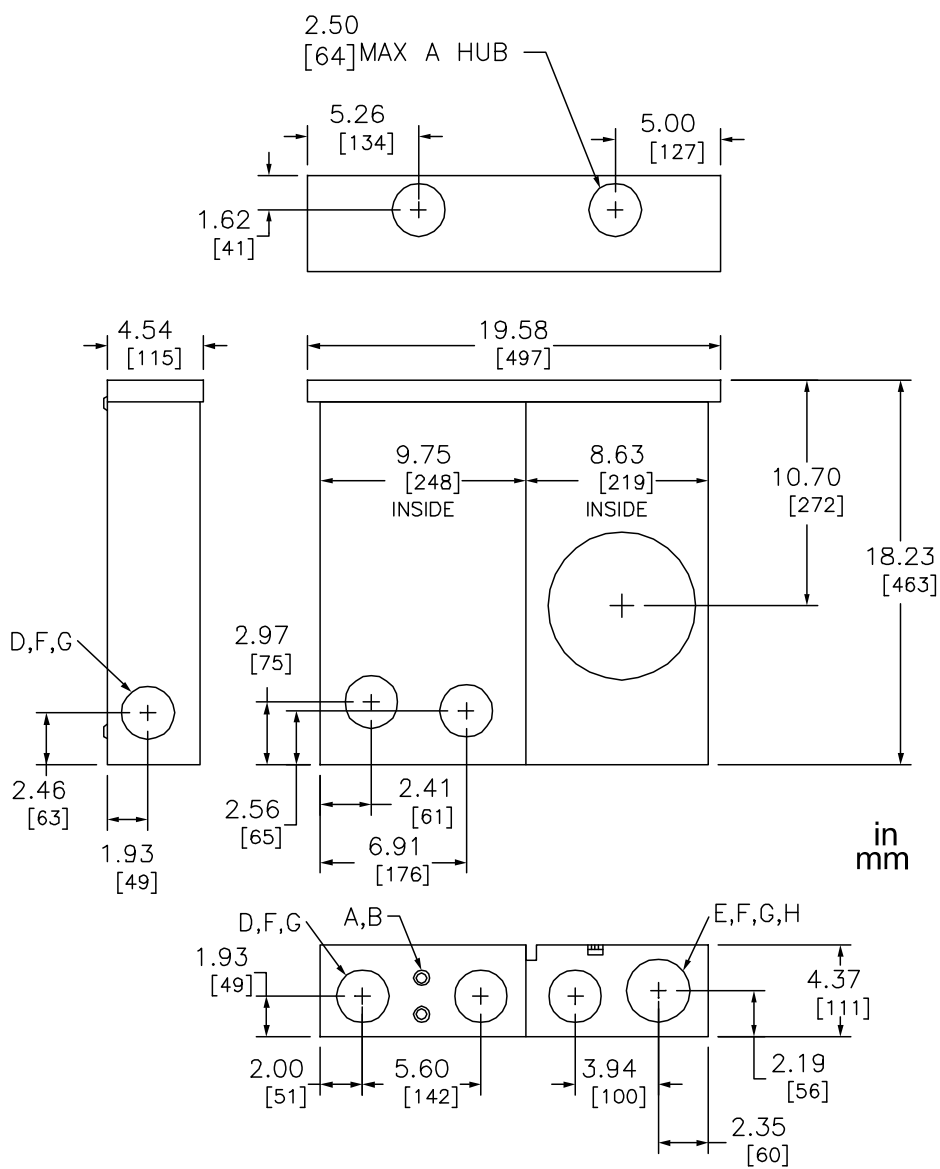
## Offer Sustainability

California proposition 65	WARNING: This product can expose you to chemicals including: Lead and lead compounds, which is known to the State of California to cause cancer and birth defects or other reproductive harm. For more information go to <a href="http://www.P65Warnings.ca.gov">www.P65Warnings.ca.gov</a>
REACH Regulation	<a href="#">REACH Declaration</a>
REACH free of SVHC	Yes
EU RoHS Directive	Compliant <a href="#">EU RoHS Declaration</a>
Mercury free	Yes
RoHS exemption information	<a href="#">Yes</a>
China RoHS Regulation	<a href="#">China RoHS declaration</a> Product out of China RoHS scope. Substance declaration for your information.

## Contractual warranty

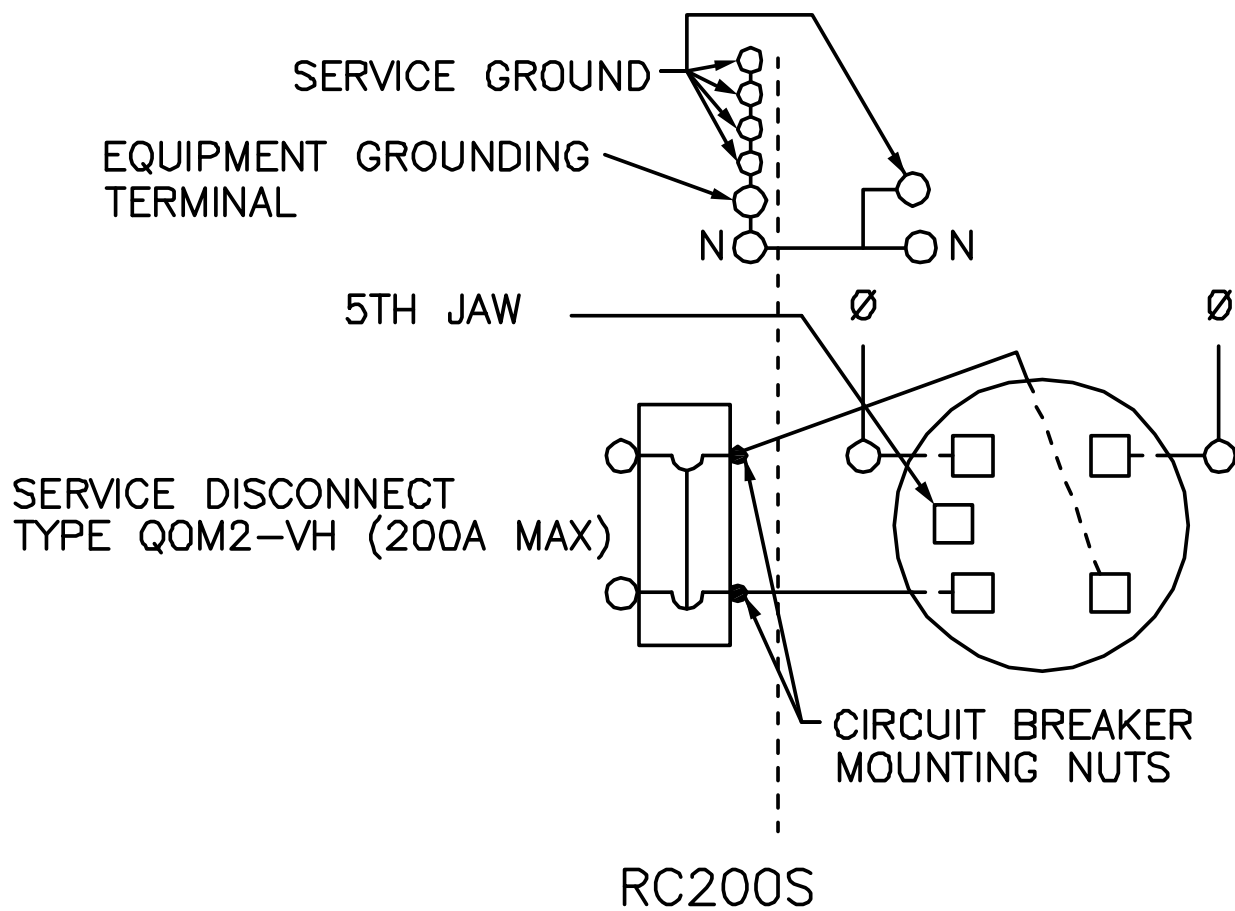
Warranty	18 months
----------	-----------

Dimensions



All dimensions are approximate. Also refer to technical documentation.

Wiring Diagram



## Product data sheet

### Characteristics

## A200

Meter pak accy, hub, 2.00 in wire size, Series A, rainproof, 3.31 in

Product availability : Stock - Normally stocked in distribution facility



### Main

Product or component type	Conduit entry Hub
Range of product	Series A

### Complementary

Cable entry	conduit entry 2"
Device composition	Adaptor plate
Height	3.31 in (84.07 mm)
Hub type	A
Mounting support	Direct mounting on box
Number of mounting holes	4
Product certifications	UL Listed
Device Application	conduit entry
Shape of screw head	Slotted hexagonal
Width	3.31 in (84.07 mm)

### Ordering and shipping details

Category	00039 - METER SOCKETS & HUBS
Discount Schedule	DE4
GTIN	00785901029519
Package weight(Lbs)	0.22 lb(US) (0.10 kg)
Returnability	Yes
Country of origin	IN

\* Price is "List Price" and may be subject to a trade discount – check with your local distributor or retailer for actual price.

Jun 2, 2021

Packing Units

Package 2 Weight	2.61 lb(US) (1.184 kg)
------------------	------------------------

Offer Sustainability

EU RoHS Directive	Under investigation
-------------------	---------------------

Contractual warranty

Warranty	18 months
----------	-----------

# QOM2200VH

Main breaker, QO, 200A, 2 pole, 120/240 VAC,  
22 kA, bolt on mount

Product availability : Stock - Normally stocked in distribution facility



## Main

Product	Circuit breaker
Range	QO
Current Rating	200 A
Voltage Rating	120/240 V AC 120 V AC
Mounting Type	Bolt-on
Number of Poles	2P
Circuit Breaker Type	Standard
Electrical Connection	Lugs
Frame Size	QOM2

## Complementary

Interrupt Rating	22 kA 120/240 V AC 50/60 Hz 22 kA 120 V AC 50/60 Hz
Wire Size	AWG 4...300 kcmil aluminium/copper
Tightening Torque	53.10 lbf.in (6 N.m) 0.01...0.10 in <sup>2</sup> (4...65 mm <sup>2</sup> ) AWG 12...AWG 2/0
Height	5.6 in (142.24 mm)
Width	3.6 in (91.44 mm)
Depth	5.07 in (128.78 mm)
Load Center Type	Main breaker
Number of Phases	1 phase
For Use With	QO load center Homeline load center

\* Price is "List Price" and may be subject to a trade discount – check with your local distributor or retailer for actual price.

## Environment

Certifications	UL Listed CSA
Ambient Rating	104 °F (40 °C)

## Ordering and shipping details

Category	00100 - QOM-VH MAIN CB
Discount Schedule	DE3A
GTIN	00785901004066
Nbr. of units in pkg.	1
Package weight(Lbs)	2.57 lb(US) (1.17 kg)
Returnability	Yes
Country of origin	MX

## Packing Units

Unit Type of Package 1	PCE
Package 1 Height	4.20 in (10.668 cm)
Package 1 width	5.50 in (13.97 cm)
Package 1 Length	6.40 in (16.256 cm)

## Offer Sustainability

Sustainable offer status	Green Premium product
REACH Regulation	<a href="#">REACH Declaration</a>
REACH free of SVHC	Yes
EU RoHS Directive	Compliant <a href="#">EU RoHS Declaration</a>
Mercury free	Yes
RoHS exemption information	<a href="#">Yes</a>
China RoHS Regulation	<a href="#">China RoHS declaration</a> Product out of China RoHS scope. Substance declaration for your information.
Environmental Disclosure	<a href="#">Product Environmental Profile</a>

## Contractual warranty

Warranty	18 months
----------	-----------